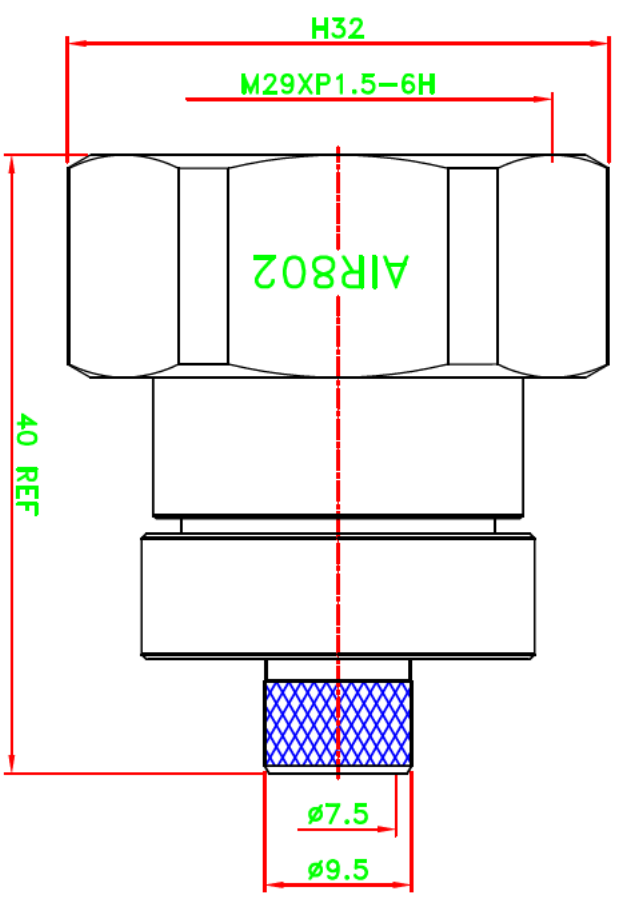


REV	DESCRIPTION\PER REQUEST	DRAWN	DATE

CRIMP SIZES REQUIRED
CONTACT: SOLDER
FERRULE: .429[10.9mm]

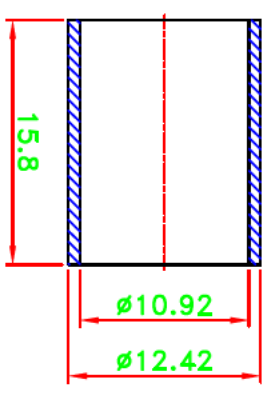
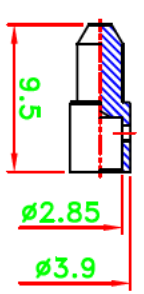
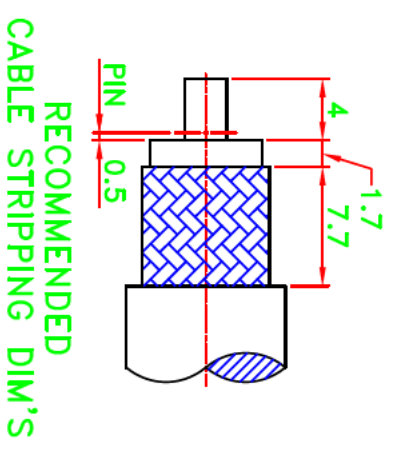
- NOTES:**
1. UNLESS OTHERWISE SPECIFIED ALL DIMENSIONS ARE IN MM.
 2. ALL SPECIFICATIONS ARE SUBJECT TO CHANGE WITHOUT NOTICE AT ANY TIME.



NOTES:FINISH(PLATING THICKNESS IN MICRO-INCHES)
1.COPPER-TIN-ZINC PL. 100 MIN. THICK

NO	DESCRIPTION/DRAWING NO.	Q'TY	MATERIAL	FINISH
8	FERRULE	1	COPPER	NOTE 1
7	SHELL	1	BRASS	NOTE 1
6	GASKET	1	SI-RUBBER	ORANGE
5	INSULATOR	1	PTFE	NATURAL
4	PIN	1	BRASS	SILVER
3	PIN	1	BRASS	SILVER
2	BODY	1	BRASS	NOTE 1
1	BODY	1	BRASS	NOTE 1

STAMP: AIR802



65C01V004-000

PART NO.	CN4716DINP
APPROVED	M. Bryant
CHECKED	
DRAWN	Kdi
DATE	07/09/15

* MAJOR DIMENSION
 UNLESS OTHERWISE NOTED TOLERANCES
 0.5-6 = ±0.2
 6-30 = ±0.4
 30-120 = ±0.6
 120-315 = ±1.0
 ANGLES = ±5°

SCALE	2/1	UNIT	mm
-------	-----	------	----

TITLE	7/16 CRIMP PLUG
DRAWING NO.	AS716-22027-T2
FILE NO. W:\PT\AS\AS716-22027-T2	AIR802->20150709
REV	B

AIR802