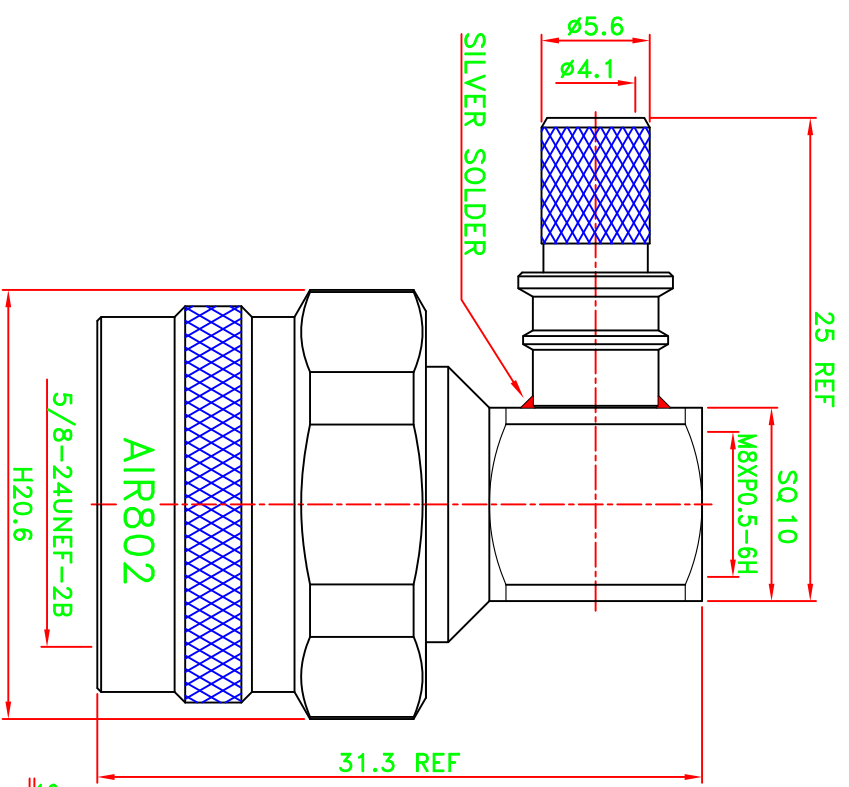
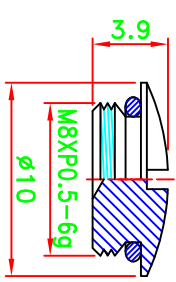
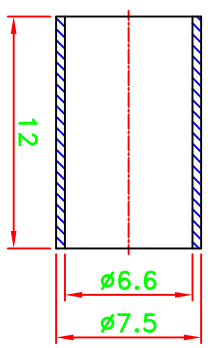
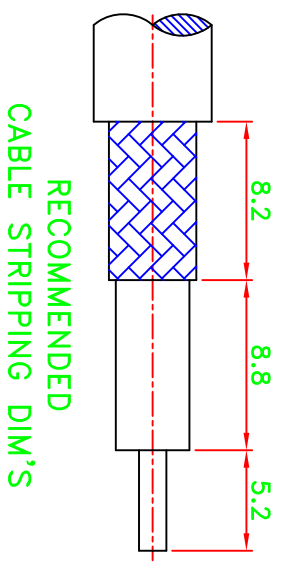


REV	DESCRIPTION\PER REQUEST	DRAWN	DATE

CRIMP SIZES REQUIRED
CONTACT: SOLDER
FERRULE: .256 [6.5mm]

- NOTES:**
1. UNLESS OTHERWISE SPECIFIED ALL DIMENSIONS ARE IN MM.
 2. ALL SPECIFICATIONS ARE SUBJECT TO CHANGE WITHOUT NOTICE. AT ANY TIME.



- NOTES:FINISH(PLATING THICKNESS IN MICRO-INCHES)**
- 1.COPPER-TIN-ZINC PL. 80 MIN. THICK
 - 2.THIN GOLD OVER ELECTROLESS NI PL. STRIKE

NO	DESCRIPTION/DRAWING NO.	Q'TY	MATERIAL	FINISH
10	SCREW	1	BRASS	NOTE 1
9	"O"RING	1	RUBBER	BLACK
8	FERRULE	1	COPPER	NOTE 1
7	SHELL	1	BRASS	NOTE 1
6	GASKET	1	SI-RUBBER	ORANGE
5	RETAINING RING	1	BRASS	NOTE 1
4	GROUNDING	1	BRASS	NOTE 1
3	INSULATOR	1	PTFE	NATURAL
2	PIN	1	BRASS	NOTE 2
1	ASSEMBLY	1	BRASS	NOTE 1

PART NO. CN3NMRA		* MAJOR DIMENSION UNLESS OTHERWISE NOTED TOLERANCES	
APPROVED	M. Bryant	DATE	01/13/15
CHECKED		DATE	01/13/15
DRAWN	Wen	DATE	01/13/15
SCALE	5/2	UNIT	mm
TITLE		FILE NO. W:\P\AS\ASN\ASN-11214-Z	
N RIGHT ANGLE CRIMP PLUG		ASN-11214-Z	
DRAWING NO.		REV A	
AIR802		AIR802->20150116	

60C01R004-000

STM:MAP:AIR802