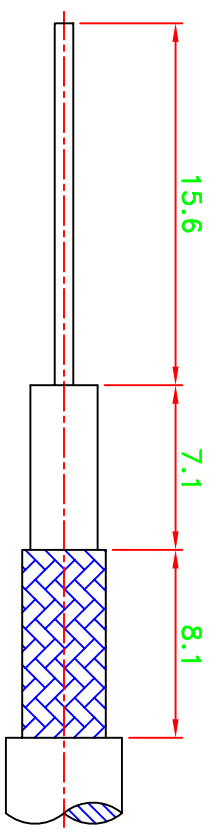
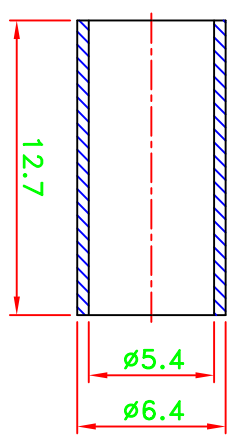
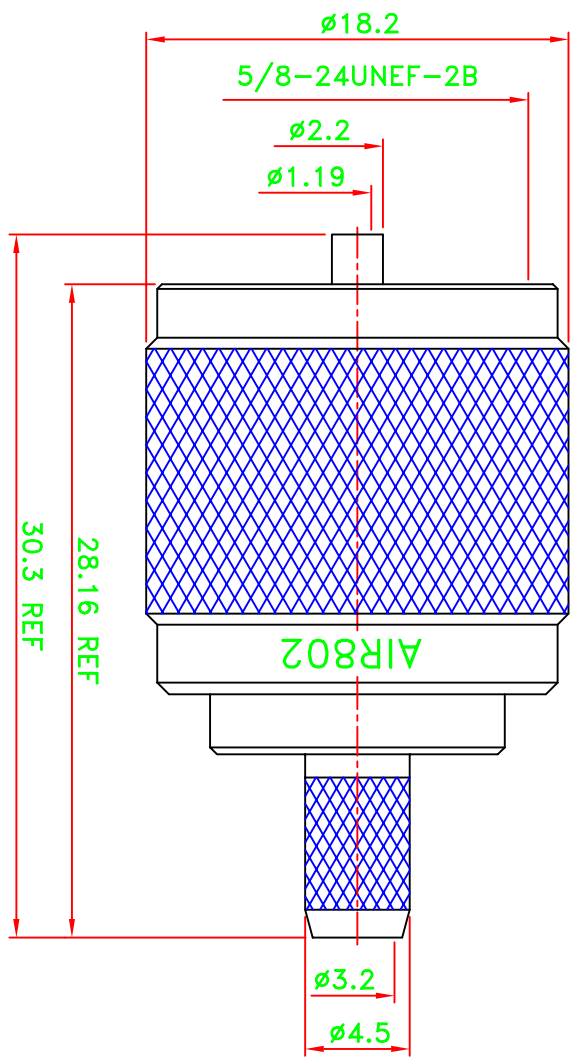


REV	DESCRIPTION \ PER REQUEST	DRAWN	DATE

**CRIMP SIZES REQUIRED**  
**CONTACT: SOLDER**  
**FERRULE: .213" [5.4mm]**



**RECOMMENDED  
CABLE STRIPPING DIMENSION**

**NOTES:**  
1. UNLESS OTHERWISE SPECIFIED ALL DIMENSIONS ARE IN MM.  
2. ALL SPECIFICATIONS ARE SUBJECT TO CHANGE WITHOUT NOTICE.

NO	Description	Qty	Material	Finish
5	Ferrule	1	Brass	Nickel
4	Shell	1	Brass	Nickel
3	Dielectric	1	Teflon	None
2	Pin	1	Brass	Gold
1	Body	1	Brass	Nickel

PART NO.		* MAJOR DIMENSION	
CN2UHFP		UNLESS OTHERWISE NOTED TOLERANCES	
APPROVED	DATE	0.5-6 = ±0.2	TITLE
M. Bryant	01/20/09	6-30 = ±0.4	UHF CRIMP PLUG
CHECKED	DATE	30-120 = ±0.6	DRAWING NO.
	01/20/09	120-315 = ±1.0	ASUHF-17025-F1-TGN
DRAWN	DATE	SCALE	UNIT
WEN	01/20/09	3/1	mm
FILE NO. W:\ms\ASUHF\ASUHF-17025-F1-TGN		DIANA-->20090120	
REV		A	