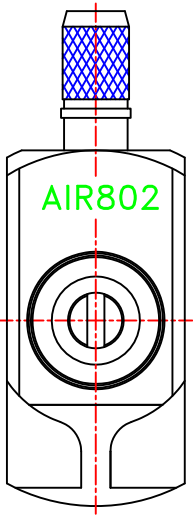
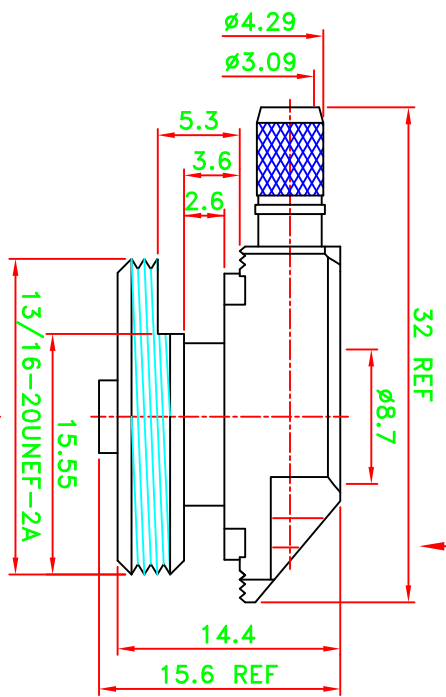
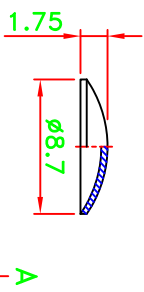
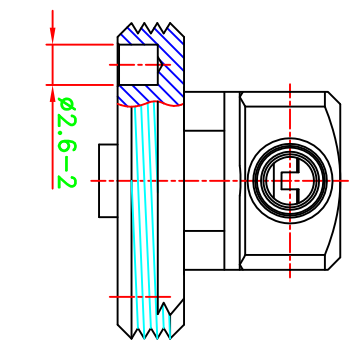
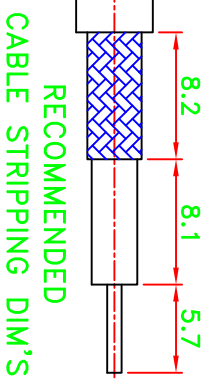
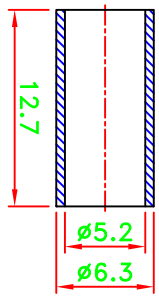
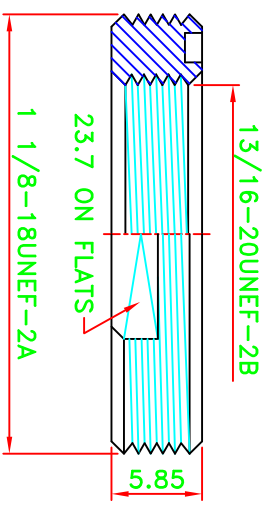


REV	DESCRIPTION \ PER REQUEST	DRAWN	DATE

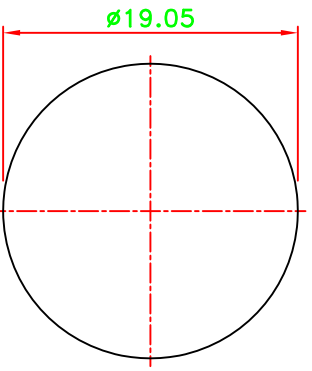
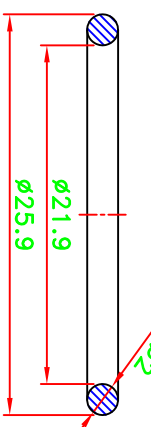
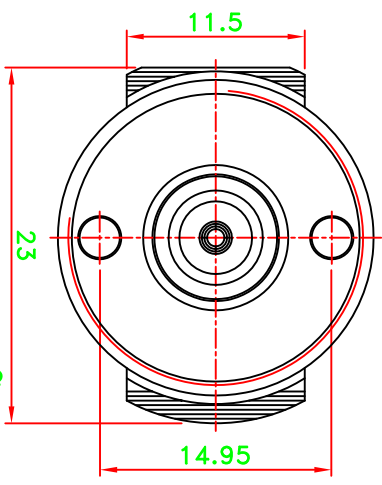
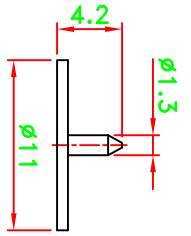
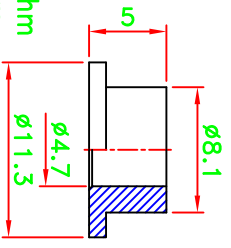
**CRIMP SIZES REQUIRED**  
**CONTACT: SOLDER**  
**FERRULE: .213[5.41mm]**



**LASER ETCHED: AIR802**



**Electrical Characteristics**  
 Characteristic Impedance: 50ohm  
 Frequency Range: 0~6GHz  
 Insulation Resistance: 1000Mohm  
 Center Contact Resistance: ≤5.0mohm  
 Outer Contact Resistance: ≤2.5mohm  
 Working Voltage: 300V rms



**RECOMMENDED MOUNTING HOLE THICKNESS: 1mm Min. 2mm Max.**

11	NUT	1	BRASS	NOTE 1
10	"O"RING	1	RUBBER	BLACK
9	COVER	1	BRASS	NOTE 1
8	FERRULE	1	COPPER	NOTE 1
7	BARREL	1	BRASS	NOTE 1
6	PRESS WASHER	1	BRASS	NOTE 1
5	INSULATOR	1	PTFE	NATURAL
4	INSULATOR	1	PTFE	NATURAL
3	PIN	1	BRASS	GOLD
2	PIN	1	BRASS	GOLD
1	BODY	1	BRASS	NOTE 1

**NOTES: FINISH (PLATING THICKNESS IN MICRO-INCHES)**  
 1. COPPER-TIN-ZINC PL. 100 MIN. THICK

**PART NO. CN2NMOLP-TM**  
**\* MAJOR DIMENSION UNLESS OTHERWISE NOTED TOLERANCES**

**APPROVED M. Bryant** DATE 08/06/15

**CHECKED** DATE 08/06/15

**DRAWN Kai** DATE 08/06/15

**AIR802**

**TITLE NMO R/A CRIMP CONNECTOR**

**DRAWING NO. AS-23138-F**

**FILE NO. W:\PPT\AS\AS#E\AS-23138-F** **REV A**

**AIR802->20160216**