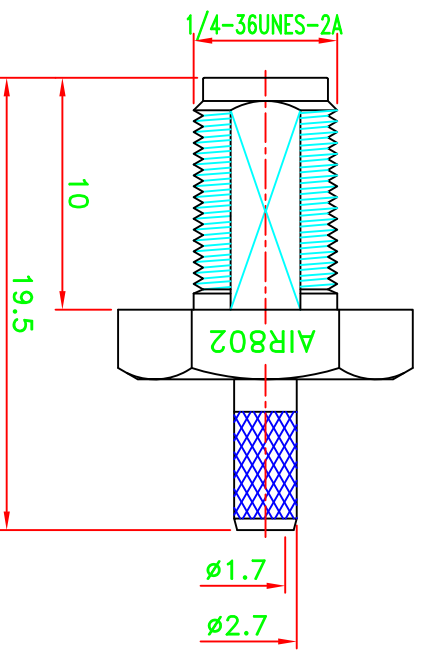
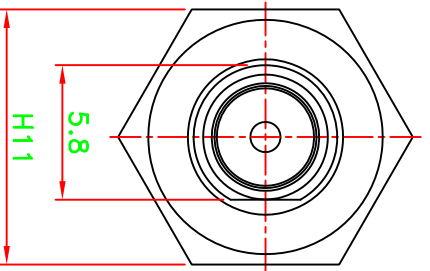
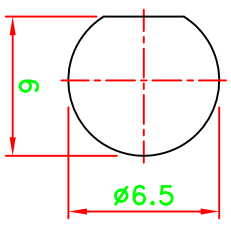
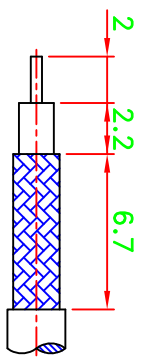
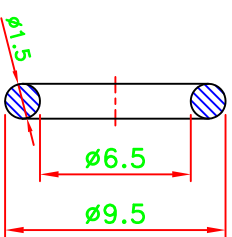
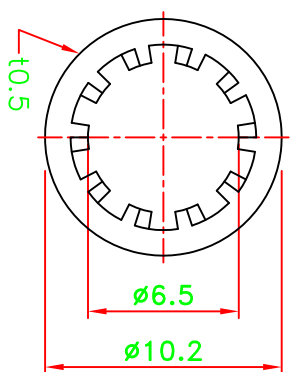
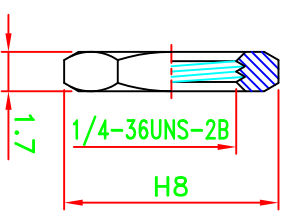
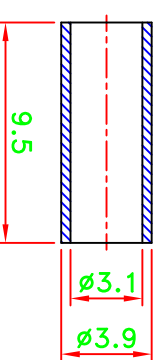
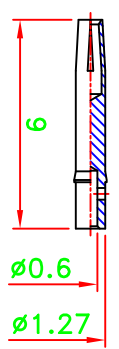


REV	DESCRIPTION\PER REQUEST	DRAWN	DATE

NOTES:
 1. UNLESS OTHERWISE SPECIFIED ALL DIMENSIONS ARE IN MM.
 2. ALL SPECIFICATIONS ARE SUBJECT TO CHANGE WITHOUT NOTICE AT ANY TIME.



CRIMP SIZES REQUIRED
 CONTACT: SOLDER
 FERRULE: .128[3.25mm]



RECOMMENDED
 CABLE STRIPPING DIM'S

RECOMMENDED
 MOUNTING HOLE

STAMP: AIR802

NO	DESCRIPTION/DRAWING NO.	Q'TY	MATERIAL	FINISH
7	NUT	1	BRASS	GOLD
6	WASHER	1	BRASS	GOLD
5	"O"RING	1	RUBBER	BLACK
4	FERRULE	1	COPPER	GOLD
3	INSULATOR	1	PTFE	NATURAL
2	PIN	1	PHOS. BRONZE	GOLD
1	BODY	1	BRASS	GOLD

70C00V200-000

PART NO.		UNLESS OTHERWISE NOTED TOLERANCES		TITLE	
CN1SMAJB		0.5-6 = ±0.2		SMA BULKHEAD CRIMP JACK	
M. Bryant		6-30 = ±0.4		DRAWING NO.	
DATE		30-120 = ±0.6		ASSMA-10402-L2-TGG	
DATE		120-315 = ±1.0		REV	
DATE		ANGLES = ±5°		A	
DRAWN		SCALE		FILE NO.	
Wen		3/1		W:\P7\AS\ASSMA\ASSMA-10402-L2-TGG AIR802->20160225	
DATE		UNIT		REV	
02/24/16		mm		A	

AIR802