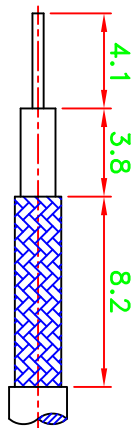


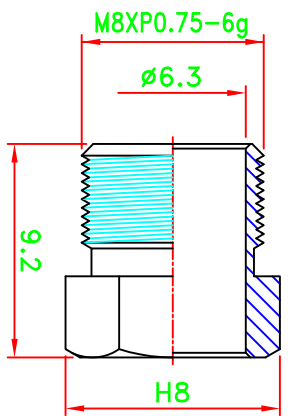
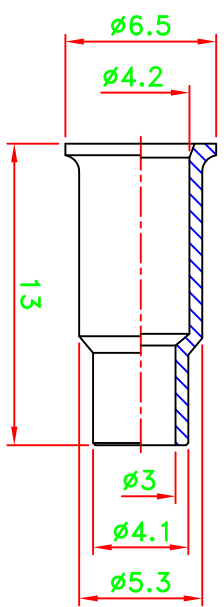
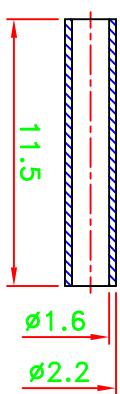
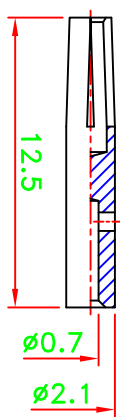
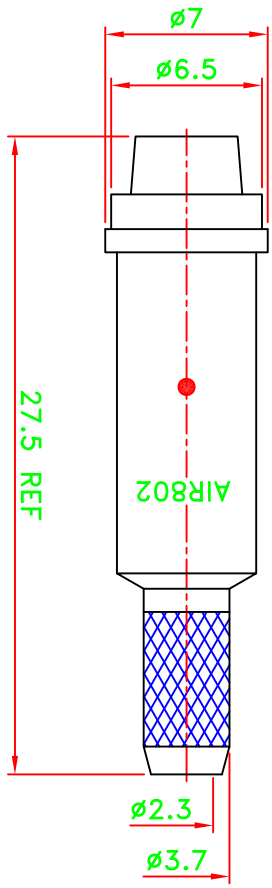
REV	DESCRIPTION\PER REQUEST	DRAWN	DATE

CRIMP SIZES REQUIRED
CONTACT: .069" [1.75mm]
FERRULE: .178" [4.52mm]



RECOMMENDED
CABLE STRIPPING DIM'S

- NOTES:
1. UNLESS OTHERWISE SPECIFIED ALL DIMENSIONS ARE IN MM.
2. ALL SPECIFICATIONS ARE SUBJECT TO CHANGE WITHOUT NOTICE AT ANY TIME.



STAMP: AIR802

NO	DESCRIPTION/DRAWING NO.	Q'TY	MATERIAL	FINISH
6	NUT	1	BRASS	GOLD
5	FERRULE	1	BRASS	GOLD
4	INSULATOR	1	PTFE	NATURAL
3	INSULATOR	1	PTFE	NATURAL
2	PIN	1	BRASS	GOLD
1	BODY	1	BRASS	GOLD

30C00V001-002

PART NO. CN1FMEJ		* MAJOR DIMENSION UNLESS OTHERWISE NOTED TOLERANCES	
APPROVED M. Bryant	DATE 01/24/13	0.5-6 = ±0.2	TITLE FME CRIMP JACK
CHECKED	DATE 01/24/13	6-30 = ±0.4	
DRAWN Yee	DATE 01/24/13	30-120 = ±0.6	
SCALE 3/1	UNIT mm	120-315 = ±1.0	DRAWING NO. ASFME-20018-L-TGG
FILE NO. W:\??\AS\ASFME\ASFME-20018-L-TGG AIR802->20140128		ANGLES = ±5°	REV B

AIR802